



**INNOVATIVE**  
**SOLUTIONS PLUS**

## COMPANY PROFILE

- PRODUCT DESIGN
- PRODUCT DEVELOPMENT
- PRODUCT STRATEGY



## INTRODUCTION



At **Innovative Solutions Plus**, consulting engineers of all disciplines play a critical role. In part because appropriate conceptual business or product designs will heavily influence a solution's durability, useability and features. More importantly, because our clients require ingenious but simple strategies and solutions that reduce costs as well as increase reliability and productivity. As such, the activities range from a business strategy, product strategy, product design, product development and remote technology support.

Brendan Reid the founder/director is a business-conscious individual offering over 30 years working as a manager in the engineering and offshore energy industries. Brendan has a very keen interest in developing and promoting innovation and collaboration not only internally but externally to deliver cutting edge solutions to industry problems and issues. Able to understand and harness the new digital technology age to advance business operations and technical solutions to drive not only the business forward but the industries the business is involved with.

Brendan has worked for some large international companies (Subsea 7, Fugro & Oceaneering), also working with major international businesses (Woodside, Chevron, FMC Technologies, Shell, BHP, McDermott etc). Brendan has also created four businesses, transiting his first Reidrafting into an engineering and offshore service company called Submec. Submec was acquired by Fugro NV who he continued to work with for nine years as the Global Remote Technology R&D manager. Now starting again with two small businesses Innovative Solutions Plus (Product Strategy, Development & Design) and Collaboration HQ an online industry solutions platform.



# COMPANY VALUES

## Our Purpose:

To bring very clever like minded individual together to solve industry problems by generating smart design options for multi-purpose solutions and risk reduction.

## Our Mission:

Assisting businesses achieve their dreams and desires by finding solutions, providing ideas and creating engineered designs through collaboration and communication.

## Our Vision:

Assisting in driving technology to deliver on the dreams of industry by creating quality industry solutions to complex problems.

## Our Values:

### Innovation



- We believe in the empowerment of individuals to be proactive and creative.
- We embrace innovation, it's in our core.
- We encourage creativity and innovation as we constantly seek to improve the quality of our services and products.
- We celebrate the breakthrough of ideas and view change as a force of possibility rather than a creator of problems.

### Collaboration



- By maintaining the highest levels of professionalism, honesty and fairness in our relationships.
- We believe in a friendly and open environment.
- We also believe in the strength of people and competencies coming together to achieve something great.
- We will respect the rights and beliefs of everyone in creating a diverse and inclusive environment.

### Passion



- We will be curious and passionate but be mature and dedicated in providing exceptional services.
- We are passionate for individual's to be responsible for their personal growth, development and environment.
- We listen carefully and respond to the needs and expectations of our employees and customers.

### Safety



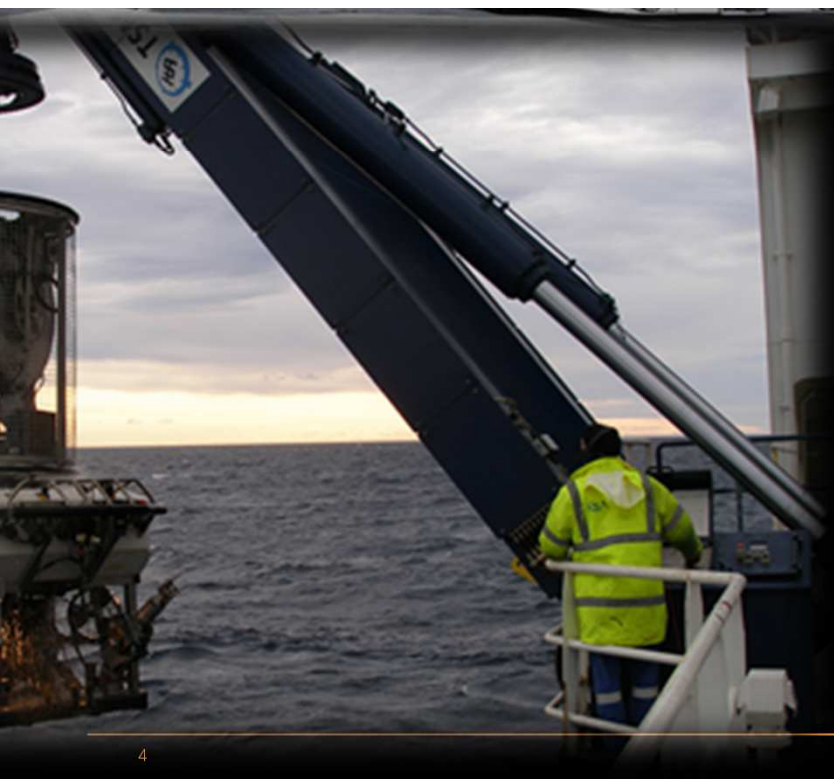
- We believe and promote a customer focus.
- We have an obsession with delivering quality.
- We will always have a scientific approach.
- We have long-term commitment to everything we do.
- We are committed to continual process improvement.
- We believe people can only grow throw education and training.

### Ownership



- We believe in strong strategic governance and process.
- We drive individual ownership for behaviour, learning and expression.
- We believe in owning the issues and delivering solutions.
- We believe in bring the ideas forward to someone who has the time and resources to get it done.
- You can trust us to do it right.





## INDUSTRY SEGMENTS



**Innovative Solutions Plus**, is involved in five key industry segments for, engineering design, developing products and services.

- **Aviation GSE:** Ground support equipment to assist in passenger and luggage services.
  - Aircraft Stairs;
  - Luggage Belt Loaders;
  - Towbars;
  - Luggage Trolleys;
  - Toilet Service Carts, etc.
- **Subsea Energy:** Subsea remote technology, equipment and tooling interfacing.
  - Remote Operated Vehicles;
  - Launch & Recovery Systems;
  - Intervention or Remote Tooling Solutions;
  - Inspection Systems;
  - Bespoke Solutions.





## INDUSTRY SEGMENTS



- **Rail Maintenance Equipment:** Hi-rail service equipment for rail infrastructure installation & maintenance.
  - Service Trucks & 4WD Vehicles;
  - Arial Work Platforms;
  - Cranes & Lift Appliances;
  - Excavators.
  
- **Mining Processing Equipment:** Material handling, structures and access equipment required in and around processing plants.
  - Cleaning Equipment;
  - Conveyors, Chute and Hoppers;
  - Work Platforms and Staging;
  - Structures and Buildings;
  - Stairs, Walkways and Ladders.



## INDUSTRY SEGMENTS



- **Truck Mounted & Lifting Equipment:** Truck mounted tanks, modules or equipment and mobile lifting equipment.
  - Site Service Trucks;
  - Water / Fuel Tankers;
  - Skid Mounted Modules;
  - Mobile Cranes;
  - Material Handling Units & Forklifts;
  - Lifting Devices and Spreader Beams;
  - Roll Over Protective Structures & Fall On Protective Structures.

# CAPABILITIES

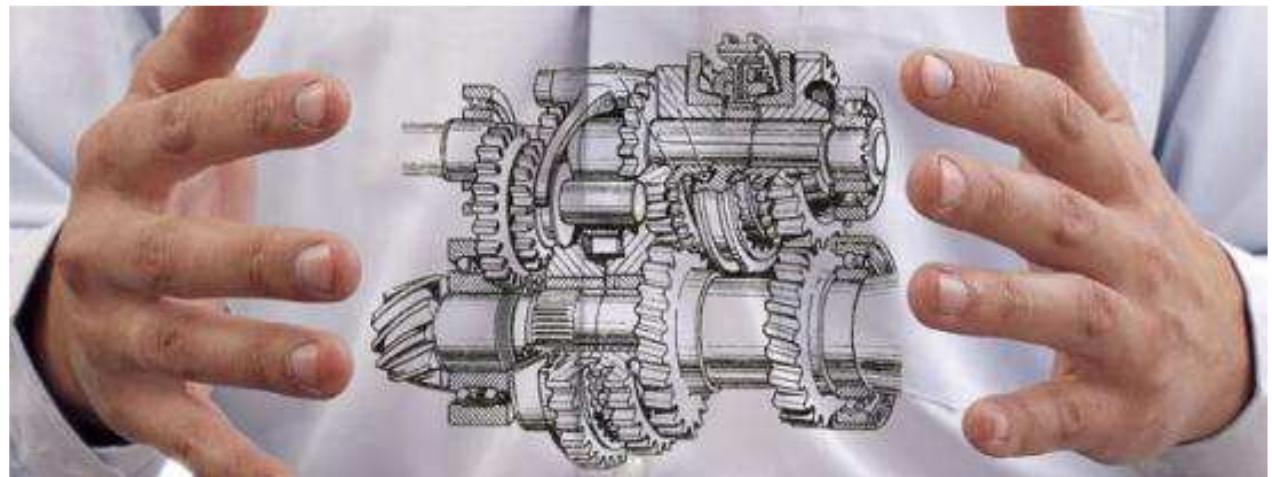
## PROBLEM > THINK > SOLUTION

*ASSISTING BUSINESSES ACHIEVE THEIR DREAMS AND DESIRES BY FINDING SOLUTIONS, PROVIDING IDEAS AND CREATING ENGINEERED DESIGNS.*

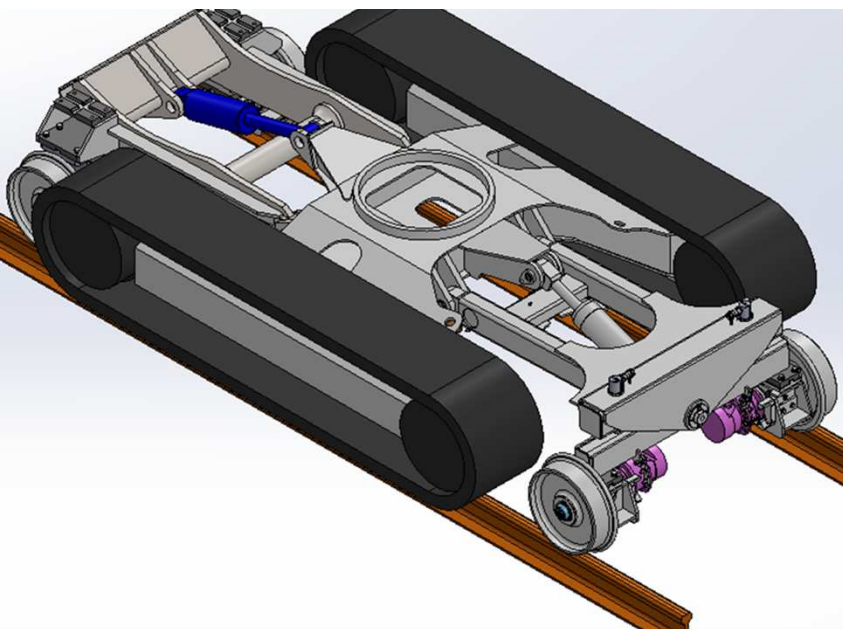
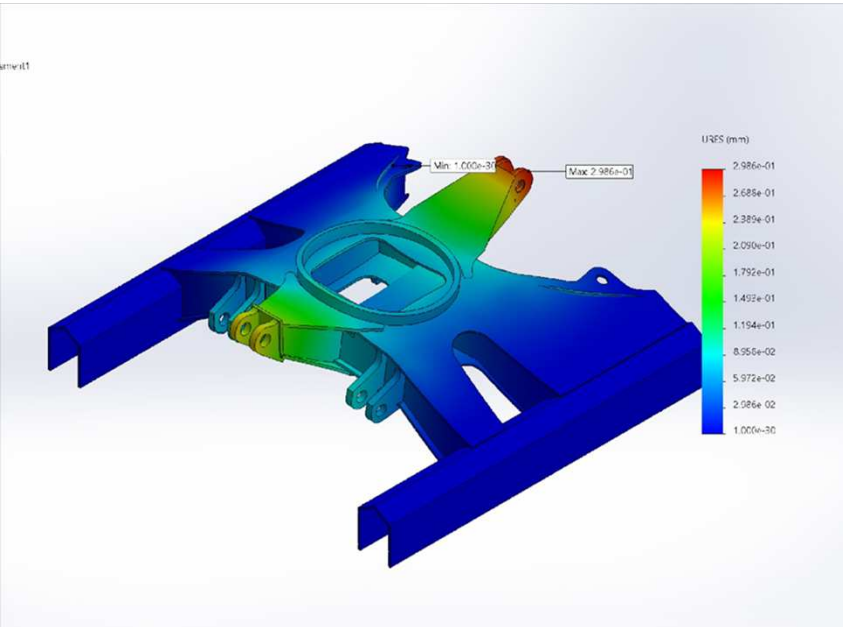
**Innovative Solutions Plus** can assist any business with any engineering issue to generate the product or solution required. We proud ourselves on our knowledge and background to solve that issue to improve the operator's efficiency or drive technology to new levels and creating that differentiator for our clients.

These services range from:

- Conceptual Design;
- Design Engineering;
- Project Management;
- Product Development;
- Fabrication / Manufacture;
- Certification & Testing;
- Operational Management;
- Product Strategy.







# CAPABILITIES



## ENGINEERING DESIGN

Design Engineering is the phase where the design is detailed, refined, whilst the planning, specifications and estimates are created.

The detailed design can include outputs such as 3D Modelling, 2D Detailing, Finite Element Analysis, Simulation, Build List Generation, Procurement Plans, Manufacturing Plans, Testing Procedures and Operation & Maintenance Manuals etc.

The engineering design process may include:

- Mechanical Design
- Structural Design
- Hydraulic Design
- Electronic / Robotic Design
- Electrical Design
- Software Development

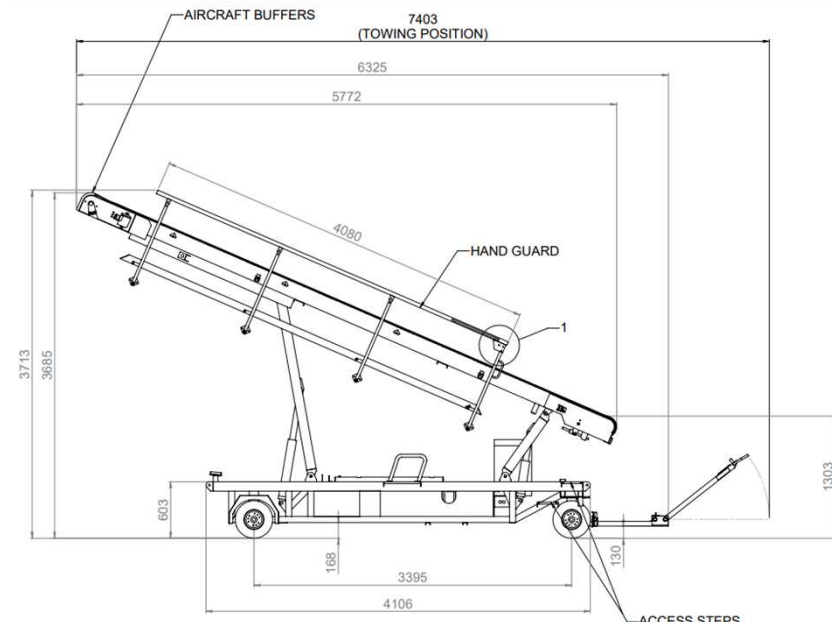
# PROJECTS



## AVIATION GSE:

### ELECTRIC DRIVE LUGGAGE BELT LOADER:

- The design and development of an all-electric driven luggage belt loader to suit an A737 aircraft.



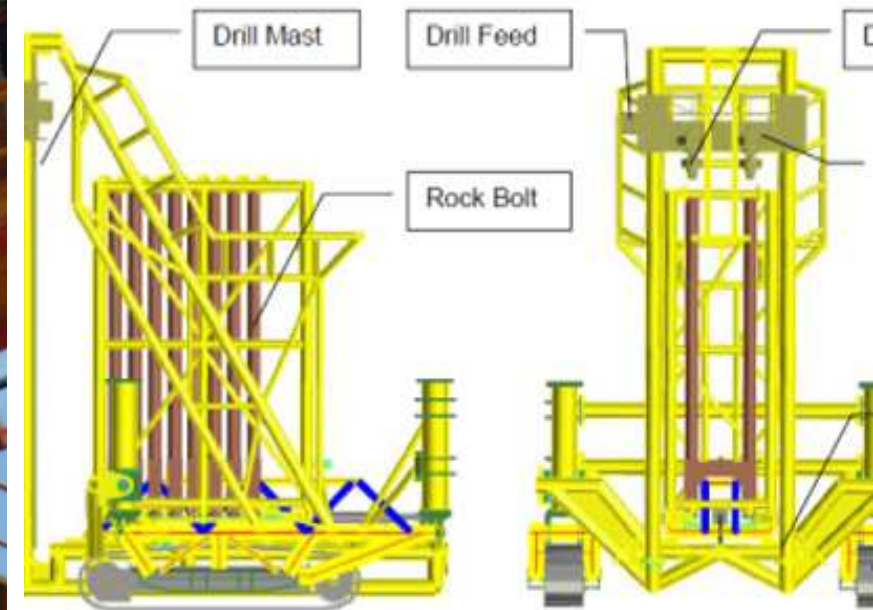
# PROJECTS



## SUBSEA ENERGY:

### SUBSEA DRILL RIG CONTROL SYSTEM:

- The design, development, installation and commissioning of the full control system for the subsea drill rig operation. The control system handled the selection of the collar, drilling the rock-bolts, moving the drill rig to the next location for the installation of 1200 pipeline collars.





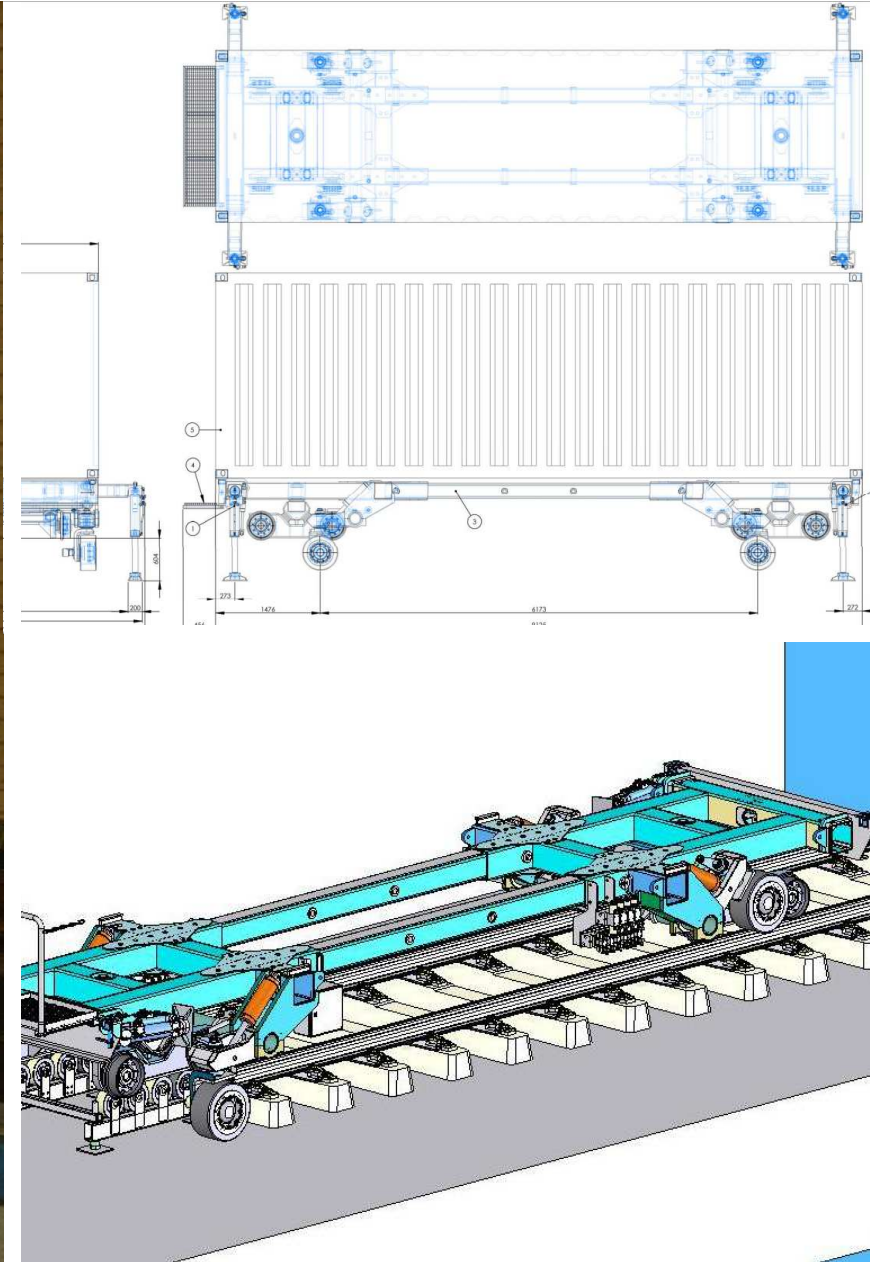
# PROJECTS



## RAIL MAINTENANCE EQUIPMENT:

### FLASH BUTT WELDING UNIT AUTO CRAWLER:

- The design and development of an Auto Crawler System for a Flash Butt Welding Unit. The system could self drive on track but also dismount itself off track at the end of the rail line



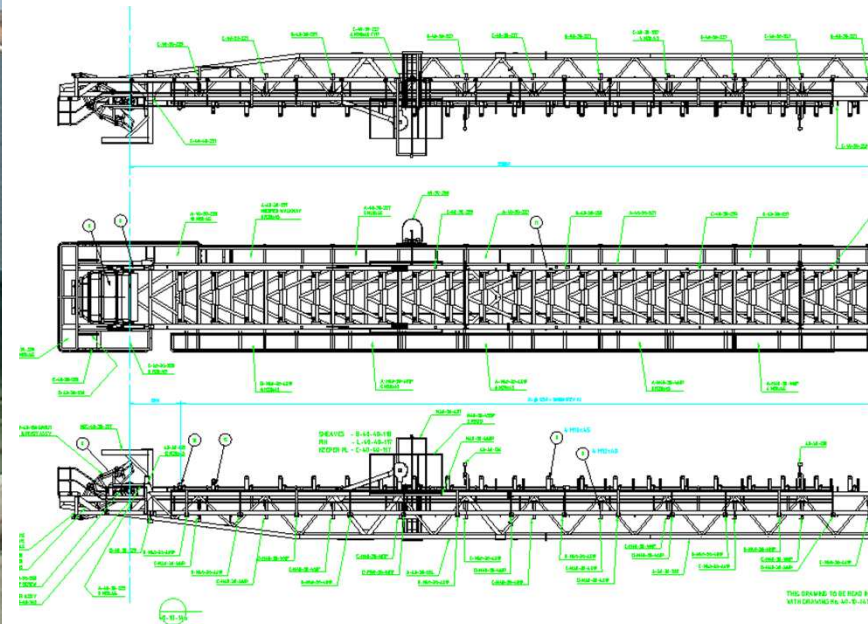
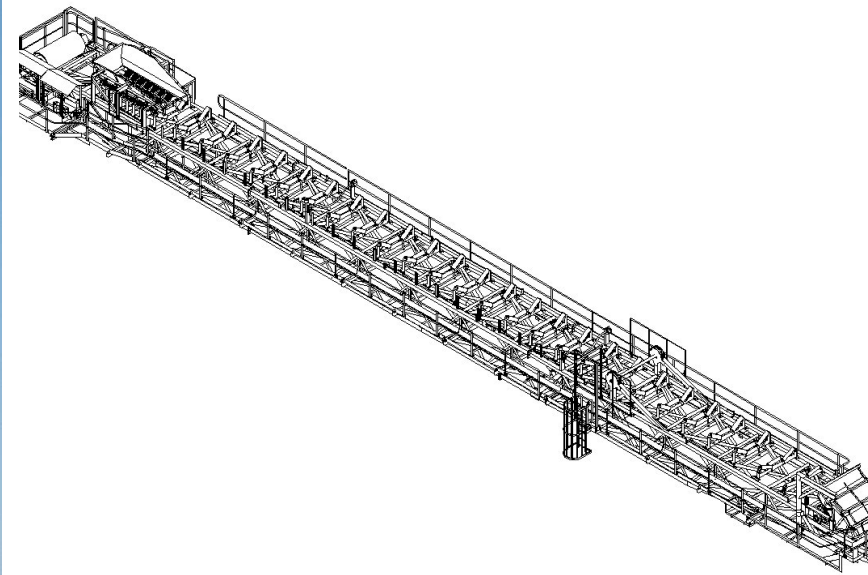
# PROJECTS



## MINING PROCESSING EQUIPMENT:

### CAPE CUVIER LOADOUT CONVEYOR END SECTION:

- The redraw and design upgrade for the Cape Cuvier loadout conveyor end section.





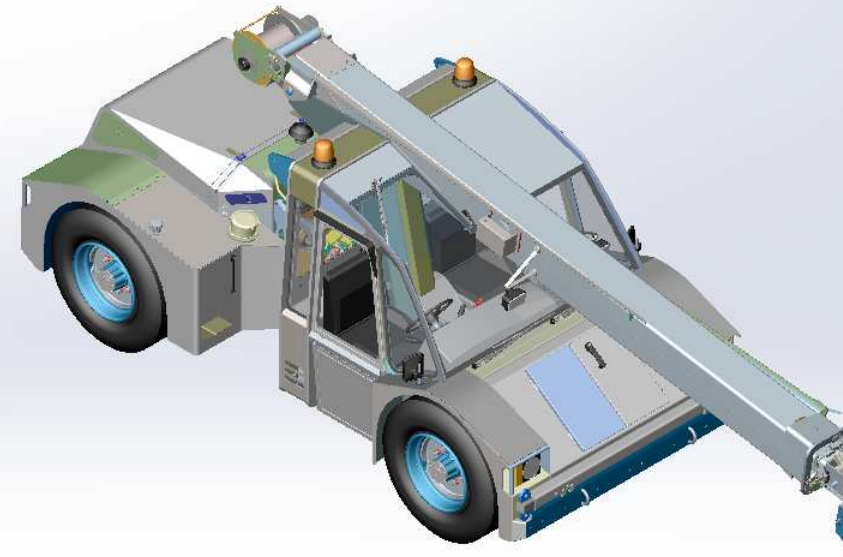
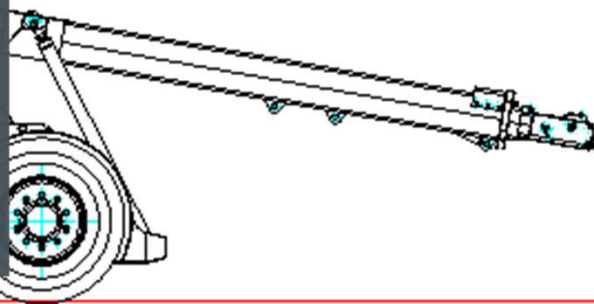
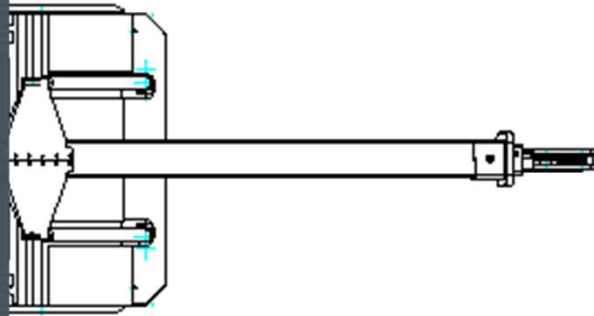
# PROJECTS



## TRUCK MOUNTED & LIFTING EQUIPMENT:

### RONCO R5000 ARTICULATED MOBILE CRANE:

- Design and development of RONCO's original R5000 articulated small mobile crane.







## CAPABILITIES

### *REMOTE TECHNOLOGY SUPPORT*



Innovative Solutions Plus can offer support in either design, manufacture, inspection, testing or upgrading of remotely operated systems (ROV's) or intelligent intervention tooling solutions for underwater environments for the energy industry as well as the offshore renewables industry.

With very extensive knowledge and experience of remotely operated systems and intervention tooling solutions, our subsea engineering team can assist operators around the world. Whatever the depth, environment or challenge we have the remote intervention solutions knowledge for all offshore projects.

The Remote Technology Support Services may include:

- ROV Operational Management
- ROV Operational Planning/Procedures
- ROV Intervention Tooling Support
- ROV Hire Tooling
- ROV System Auditing/Selection
- ROV System Integration/Innovation



# SUPPORT



## ROV OPERATIONAL MANAGEMENT: ROV SURVEY, DRILL SUPPORT, IRM AND CONSTRUCTION:

- Management of the day-to-day ROV offshore operations, crewing and spares and maintenance planning for ROV operational activities.





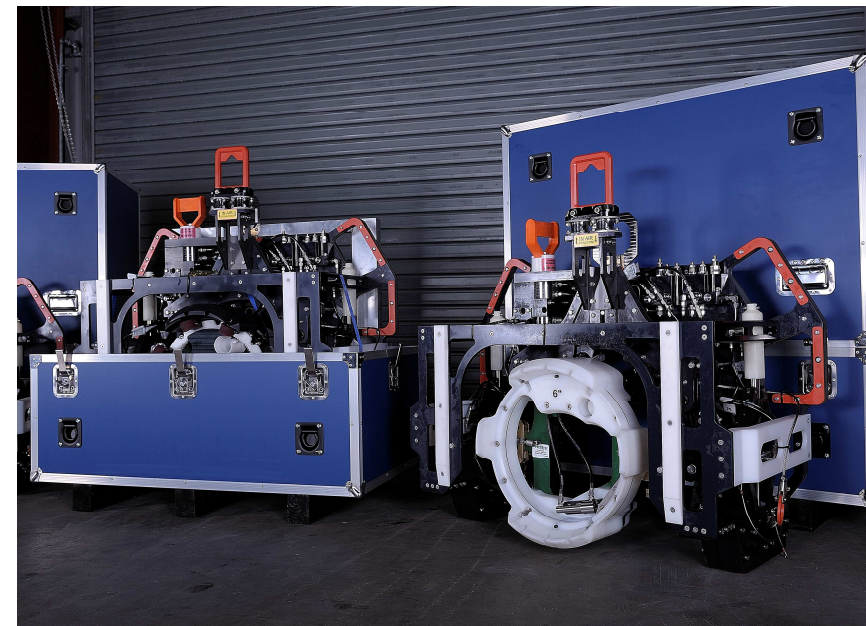
# SUPPORT



## INTERVENTION TOOLING SUPPORT:

### SELECTION/DESIGN/PROCURE:

- The identification of the appropriate intervention tooling required and/or available. Designing a solution to achieve the required intervention tasks and be able to manufacture or procure to meet the delivery dates.





# SUPPORT



## ROV TOOLING HIRE:

### SELECTION/HIRE:

- The identification of the appropriate ROV tooling required and/or available. Locate and prepare hire tooling for offshore ROV operations.



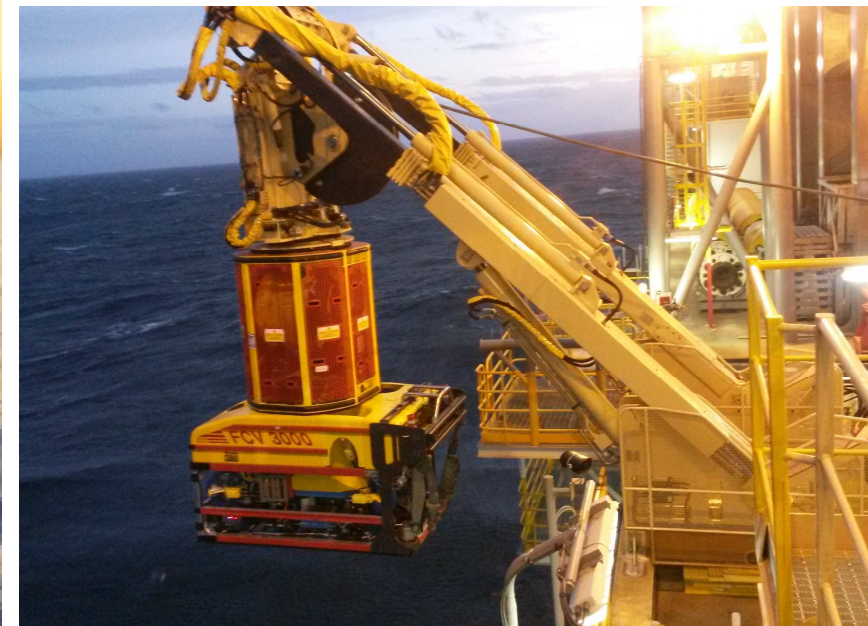
# SUPPORT



## ROV AUDITING/SELECTION:

### VERIFICATION:

- Conduct ROV System audits to the IMCA guidelines for offshore operations.
- Conduct reviews of vessels/project operational requirements for the selection of the appropriate ROV system to complete the project tasks.



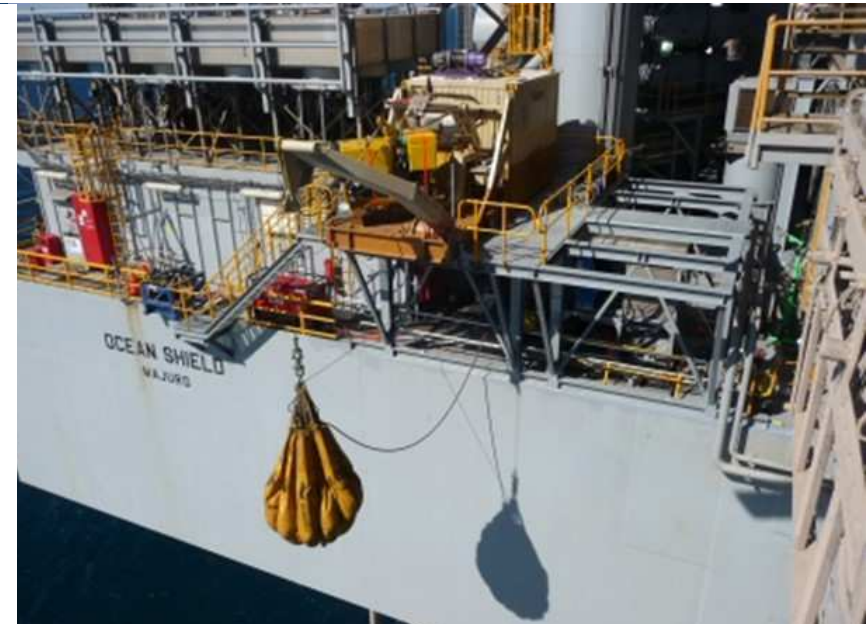


# SUPPORT



## *ROV INTEGRATION/INNOVATION: MOBILISATION/NEW TECHNOLOGY:*

- Plan and manage the mobilisation or de-mobilisation of ROV system on/off Rigs or Vessels.
- Investigate new technology within the ROV sector or identify new technology that may be a differentiator required to meet project requirements.





# Innovative Solution Plus

Address: 92- 262 Lord Street, Perth WA 6000

ABN: 34 617 318 760

Est: Jan 2018

Phone: +61 403 316 134

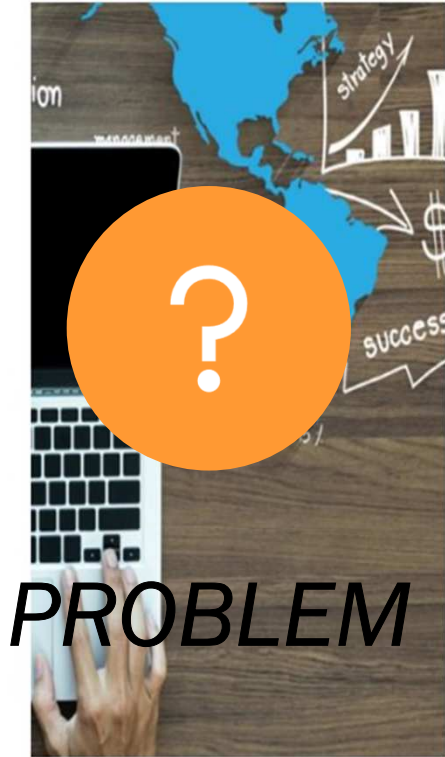
Email: [admin@innsolplus.com](mailto:admin@innsolplus.com)

Website: [www.innsolplus.com](http://www.innsolplus.com)

LinkedIn: <https://www.linkedin.com/company/innovative-solutions-plus/?viewAsMember=true>

Facebook: <https://www.facebook.com/innsolplus/>





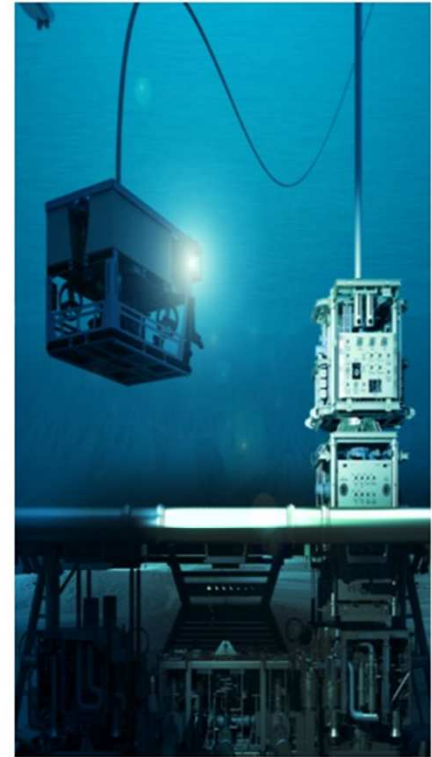
*Business Strategy*



*Product Strategy*



*Product Development*



*Remote Technology Support*



**INNOVATIVE**  
**SOLUTIONS PLUS**